

FRILO Control Center FCC

Contents

Overview	2
Starting FRILO Control Center	3
User interface	4
Sorting / Show and hide columns	4
Search function (F3 key)	4
Menu bar / multi-function bar	5
Tabs	5
Folder	6
Projects	7
Menu options/context menu	7
Edit page layout for this project	8
Items	9
Meaning of the column symbols	9
Menu options/context menu	9
Programs	11
FRILO Software	11
Favorites	11
Test	11
View update info / manual	11
Extras	12
Search for deleted projects	12
Search for deleted items	12
Search existing projects	12
Clean folder	12
Restore from repository	12
Synchronization	12
Load demo projects	13
Page Layout templates	13
Helpful application hints	14
Context menu	14
First steps	14
Export/save, import/restore projects	16
Synchronize projects	17
Import/export items (FRILO and DC)	17
Page layout	18

Basic Documentation – Overview

In addition to the individual program manuals, you will find basic explanations on the operation of the programs on our homepage www.frilo.com in the Campus-download-section.

Overview

FRILO Control Center, abbreviated to FCC, is the central environment for the starting of FRILO applications and the management of projects, items and other data.

The system is based on the following structure:

Project folder	freely selectable project storage folders
Projects	freely selectable number of projects in a project folder
Items	freely selectable number of items in a project

Benefits of the FRILO Control Center

- Unlimited network compatibility
- Well-structured filing of your projects and items due to an intelligent folder system
- Fast and safe access to your data due to a reliable database system (Firebird, SQLCE....)

Old and new data management (for users of very old FRILO versions)

Import: To edit and process "old projects/items" (FL-Manager or F+L-Explorer) with the FCC data management you must import these projects. A comfortable selection dialog allows you to do this in a few minutes.

Data safety: Your "old" projects/items will be preserved unchanged, because the imported projects are stored separately (which prevents the former versions to be overwritten by the new system).

Compatibility: New FCC-projects can be exported for the "old" data management system" to ensure that you can open and edit new projects on machines on which only the old version is installed.

Distributed data management at different locations

In the FCC-concept, data are managed centrally via the database.

Remote WAN access is supported by the system.

The data themselves such as the individual item files are stored separately in user-defined folders.


The system allows data keeping and storage on several sites and central management at the same time. All projects are available to all users.

You can find more information in the document [FRILO-Software_eng.pdf](#)

Starting FRILO Control Center

First, start FRILO Software via the corresponding icon on your Windows® user interface. Launch FRILO Control Center from the FRILO Software window.

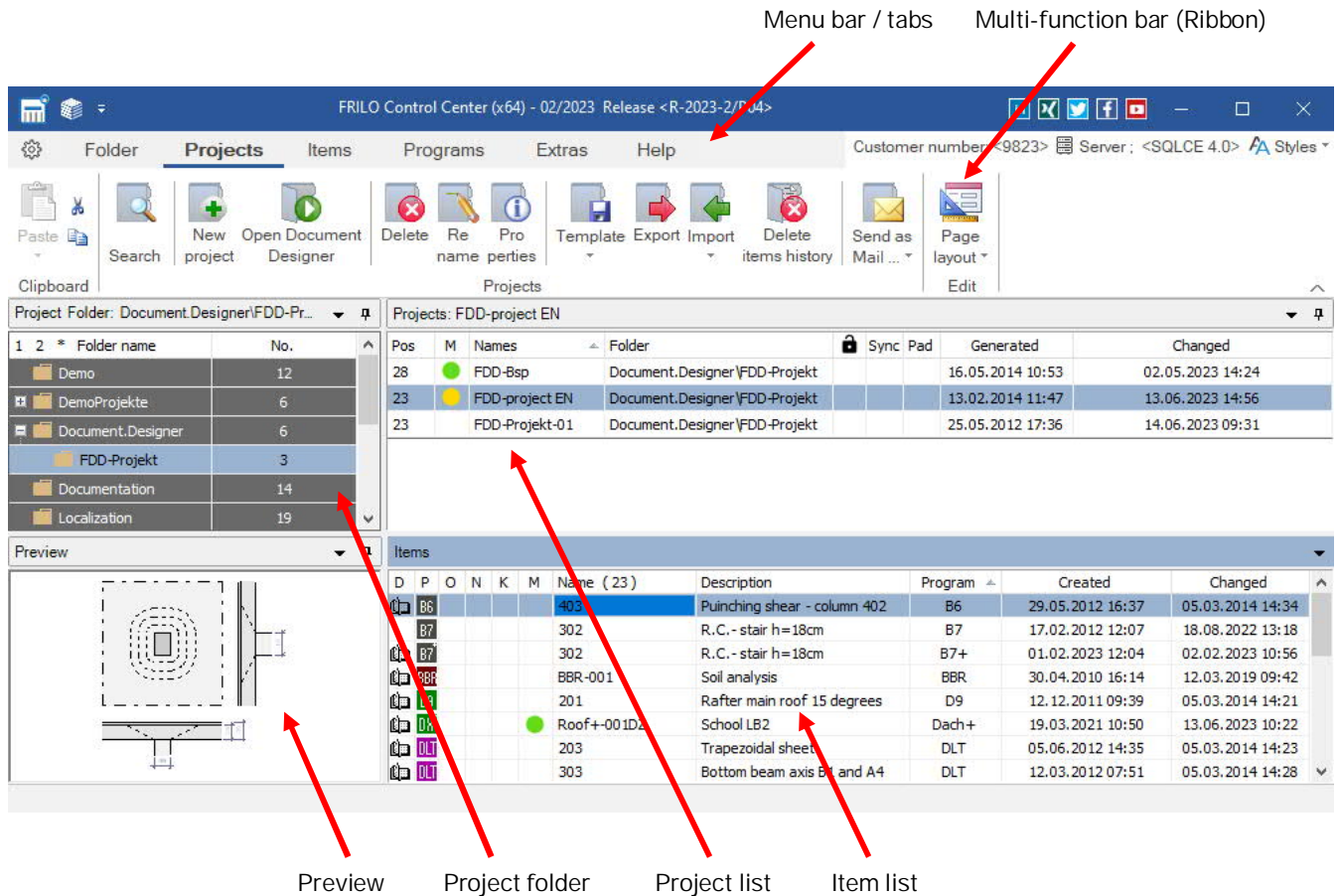


Use the button  to open a menu for configuring the FRILO program system. Furthermore you can start the Teamviewer here. By remote maintenance, our hotline can help you solving problems quickly and easily via the TeamViewer - together we can work directly on your screen.

Click "Documents" to display online update information, the FRILO newsletter and general information in PDF format.



User interface

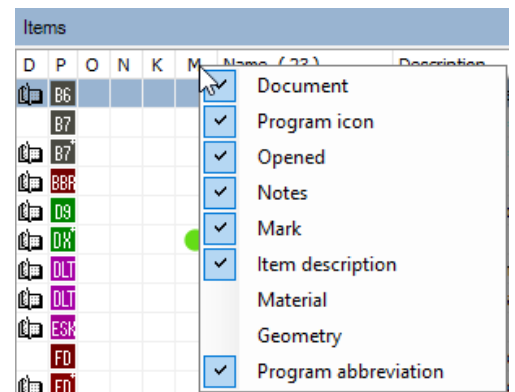


Sorting / Show and hide columns

Via context menu (right click) on the upper table row you can define which columns are to be shown or hidden (applies equally to folders/projects/items).

By clicking on one column heading, the rows can be sorted in ascending or descending order (e.g. click on "Changed" to sort by date of change).

The columns can be made larger/smaller by dragging them with the mouse.

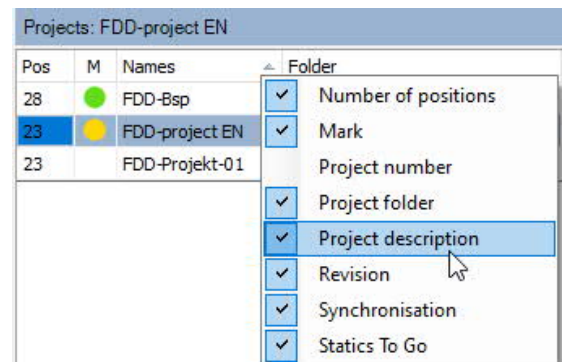


Project description: If a project description has been entered under "[Project properties](#)", an "X" mark appears in this column. The description is displayed via tooltip for information.

Fig. right: Column options in the project window.

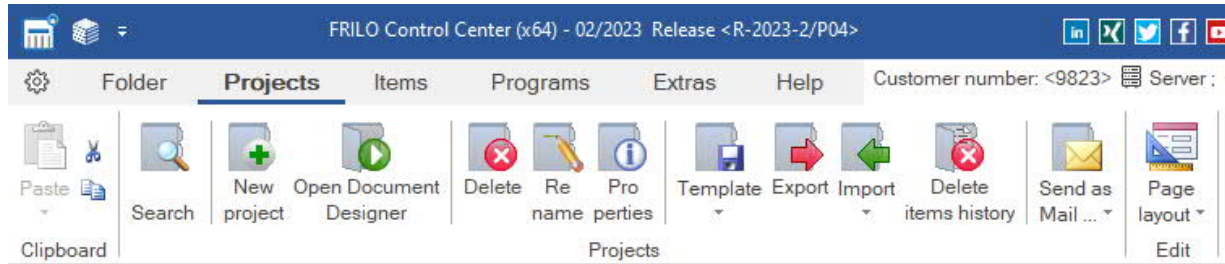
Search function (F3 key)

In a search dialog you can search for existing projects, items or also for items of a certain program. For example, you can search for program abbreviations such as "PLT". You can also access this search dialog by pressing the F3 key.



Menu bar / multi-function bar

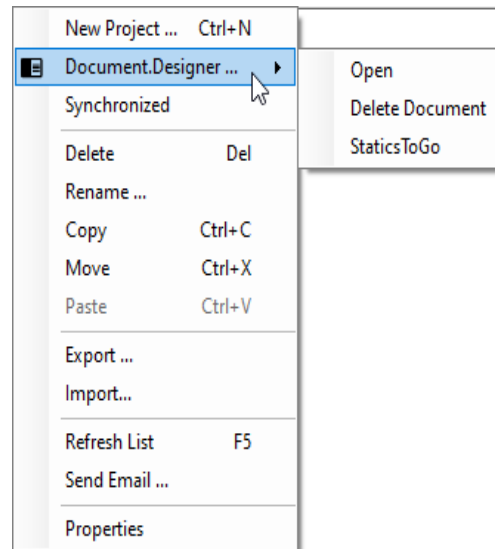
The menu options are shown as tabs. When selecting a menu option, the most important submenu options are displayed in the multi-function bar below in the form of icons marked with a descriptive name.



Importantnote:

Additional functions are available via the context menu (right mouse button).

Ill.: Multi-function bar of the menu option "Projects". To display a context menu, click right in the [corresponding section](#) (Project folder, Project list, Item list).



Tabs

- Folder see the chapter [Folder](#)
- Projects see the chapter [Projects](#)
- Items see the chapter [Items](#)
- Programs Start [programs](#) or demoversions directly
- Extras see the chapter [Extras](#)
- [Help](#) online help, Support request by mail, teamviewer, patch and release information, update info and information about the license and the version

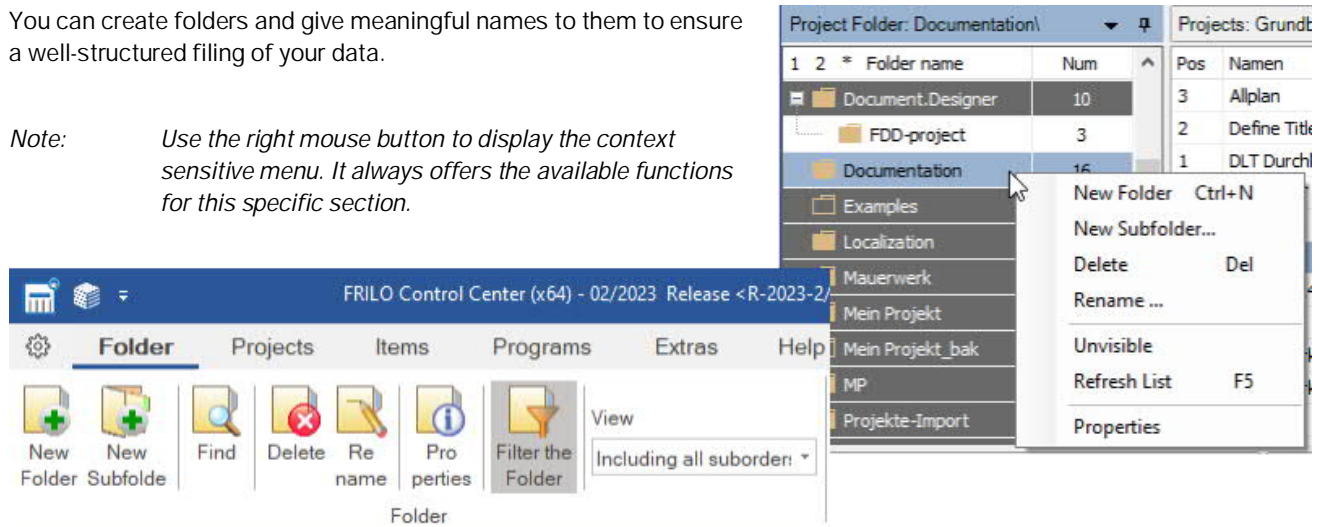
Server indicates the database server set via Configuration (local=localhost or the network server)

Styles defines the color scheme of the user interface (blue, silver, black)

Folder

You can create folders and give meaningful names to them to ensure a well-structured filing of your data.

Note: Use the right mouse button to display the context sensitive menu. It always offers the available functions for this specific section.



New Folder allows you to create a new folder and specify a folder name and a storage path or select an existing storage location.

New Subfolder allows you to create a subfolder below the currently selected folder. Optionally, you can automatically set up a new project with this folder name.

Search In a search dialog you can search for existing projects, items or also for items of a specific program. For example, you can search for program abbreviations such as "PLT". You can also access this search dialogue by pressing the F3 key.

Delete allows you to delete the selected folder **with all projects in it** after clicking OK in the confirmation prompt.

Rename allows you to change folder names

Unvisible allows you to hide the folder in the folder list. To make the folder visible again, click on the "Folder Filter" icon (2x), then on the now visible, but grayed folder (right mouse) and again on "Invisible".

Refresh list allows you to update the folder list, after adding subfolders by importing projects, for instance.

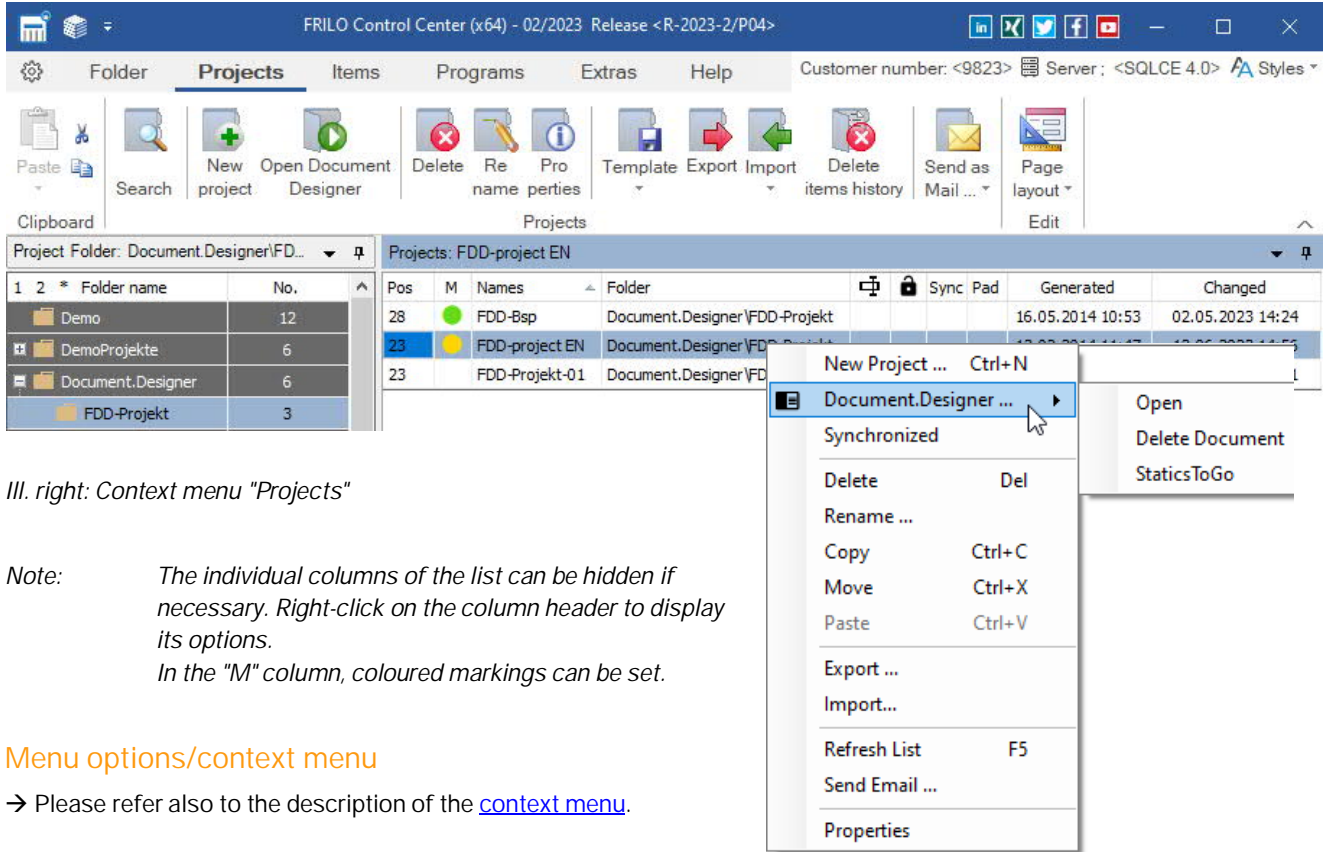
Properties allows you to display folder details and hide or display the folder on the network.

Note: Click to a folder to display the projects contained in it. The corresponding [project list](#) is displayed in the right window.

Projects

All projects of the selected folder are listed in the [project list](#).

The number of included items is shown in the "Item" column (Pos).



III. right: Context menu "Projects"

Note: The individual columns of the list can be hidden if necessary. Right-click on the column header to display its options.
In the "M" column, coloured markings can be set.

Menu options/context menu

→ Please refer also to the description of the [context menu](#).

New project allows you set up a new project without any data in it.

Document.Designer... allows you to

- open a project document in [Document Designer](#).
- delete the document
- mark the document for the app [StaticsToGo](#) (Download: [Android/IPAD](#)).

Synchronized Synchronization with an external medium such as USB-Stick. It is also possible to synchronize the project with a Tablet-PC - the FRILO-App "StaticToGo" is required. See chapter "[Project synchronization](#)".



A synchronized project is marked with the symbol . If no external medium is connected (USB...) the symbol is displayed.

Delete allows you to delete the selected project from the list after clicking OK in the confirmation prompt. You can select several projects for deletion with the help of the Shift or the Ctrl key. [Extras](#) allows you to restore deleted projects unless you have removed them completely from your computer with the help of the "Clean up folder" function.

Rename allows you to change a project name.

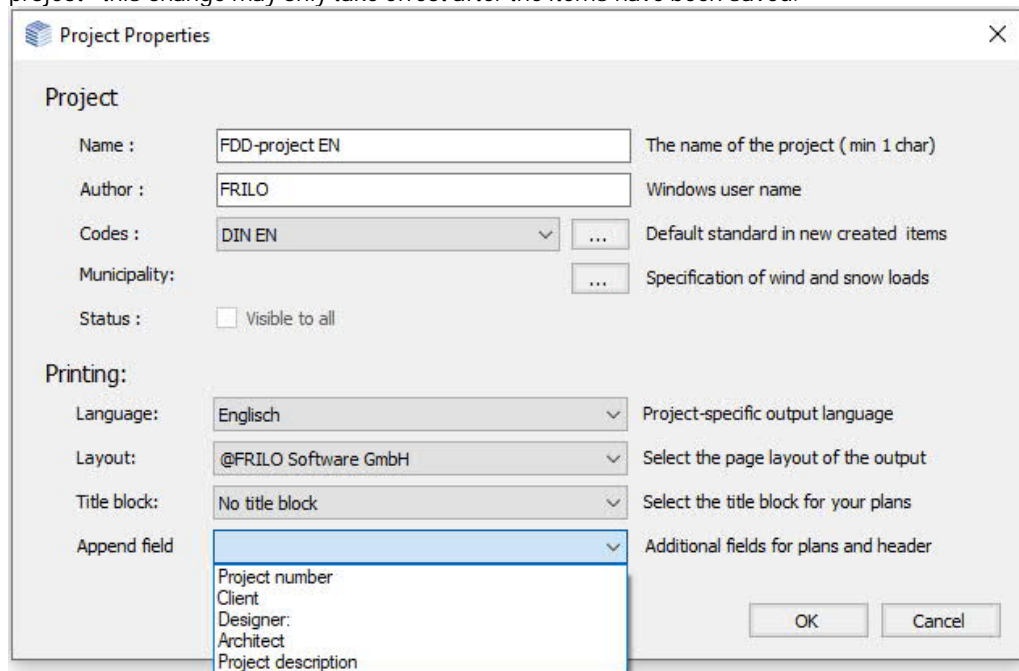
Copy allows you to copy a single or several projects for subsequent pasting into another folder.

Move allows you to cut the selected project and paste it into a subsequently selected folder by clicking right in the area of the project list and selecting "Paste" in the context menu.

Paste allows you to paste a previously copied project in the selected folder.

Export... allows you to save projects in freely selectable folders. Default is D:\FriloStatik\Backup. The files have the extension "archive".

- Import... allows you to import projects, restore saved projects, see [Saving, importing and exporting projects](#). You can also restore older projects that were created with FLManager (*.flbak files).
- Delete items history the entire items history for this project is deleted (symbol in the top menu) - for individual deletion see under [Items](#).
- Refresh List allows you to update the project list (after deleting projects for instance).
- Send email send a project per e-mail as an *.archive file. The recipient can import this project with the help of the restore function. You can add additional files to the enclosure.
- Properties display/edit the project properties (name, default settings for standard/national annex and municipality, layout used, other data). The output language can be set here according to the project - this change may only take effect after the items have been saved.

The screenshot shows the 'Project Properties' dialog box with the following fields and options:

- Project:**
 - Name: FDD-project EN (The name of the project (min 1 char))
 - Author: FRILO (Windows user name)
 - Codes: DIN EN (Default standard in new created items)
 - Municipality: (Specification of wind and snow loads)
 - Status: Visible to all
- Printing:**
 - Language: Englisch (Project-specific output language)
 - Layout: @FRILO Software GmbH (Select the page layout of the output)
 - Title block: No title block (Select the title block for your plans)
 - Append field: (Additional fields for plans and header)
 - Project number
 - Client
 - Designer:
 - Architect
 - Project description

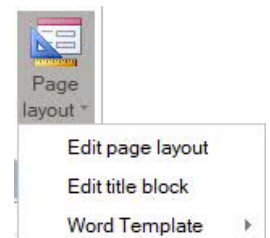
Buttons: OK, Cancel

Here you can also set the standard defaults when starting a new item.

Tip: Added fields (project number - project description) automatically appear in the [Document Designer](#) title page if you select the template "Title page with Macros.dotx".

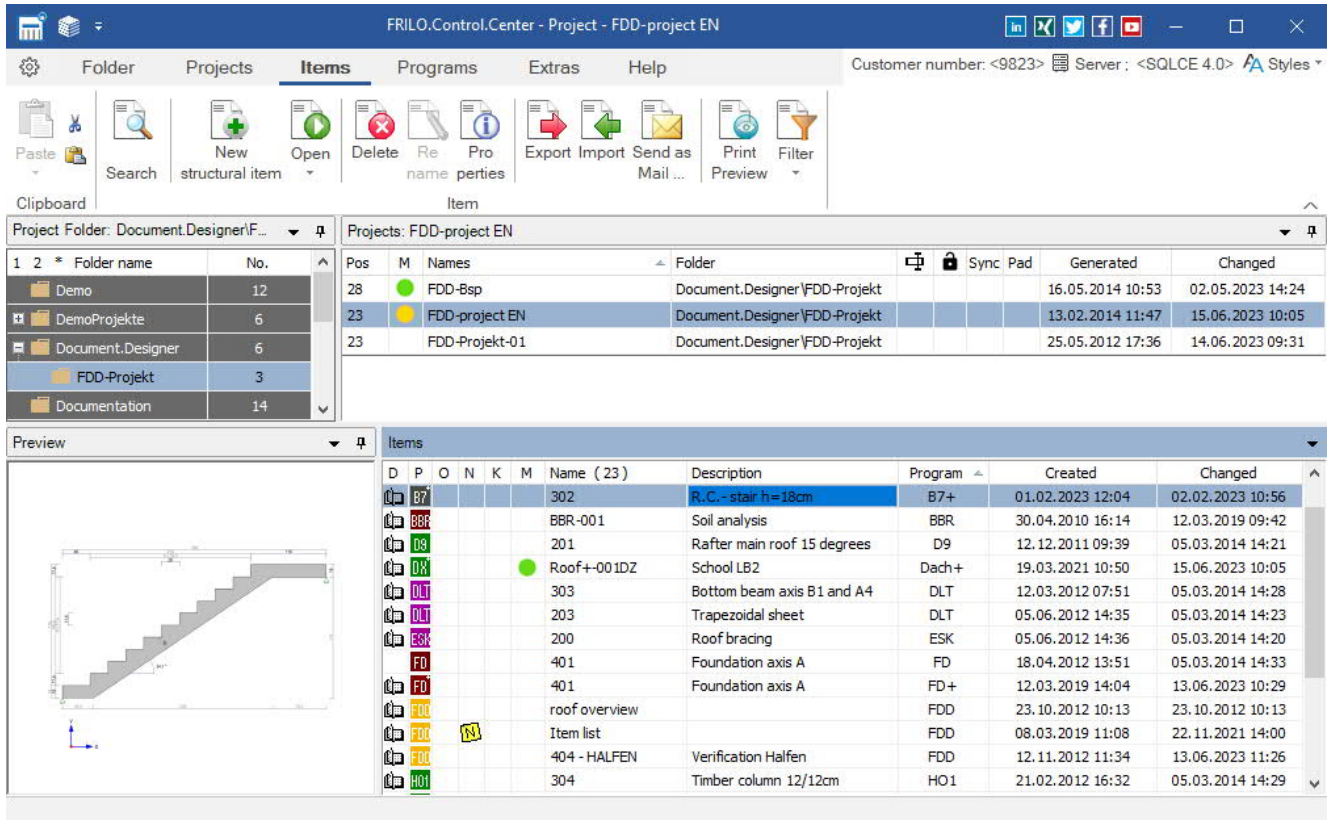
Edit page layout for this project

The page layout (page header, margins, font types...) is project specific. It is stored together with each project and included in the export data or the mail dispatch. You can edit the project-specific page layout with the help of this function. See also the description of the [Page layout](#).



Items

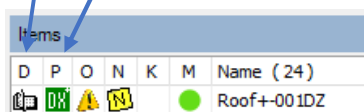
All items of the selected project are listed in the [item list](#).



Meaning of the column symbols

D: Item is included in the static document ([Document Designer](#))

P: program abbreviation



O: Item is opened (important in network operation)

N: Note on the item available

K: Coupling with the item of another program available

M: Colour marking (click in the column to get a selection)

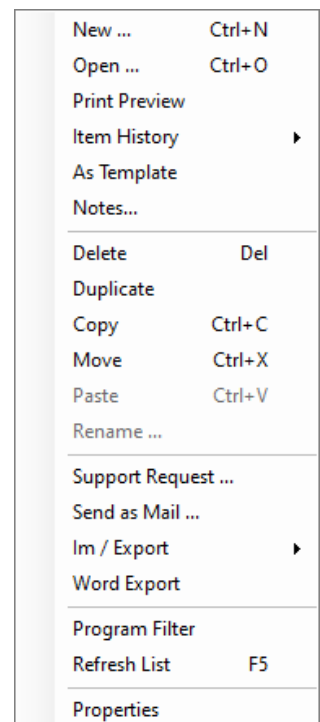
See also [Sort/Hide Columns](#).

Note: open the static document by doubleclick on the booksymbol (left).

Menu options/context menu

→ Please refer also to the description of the [context menu](#).

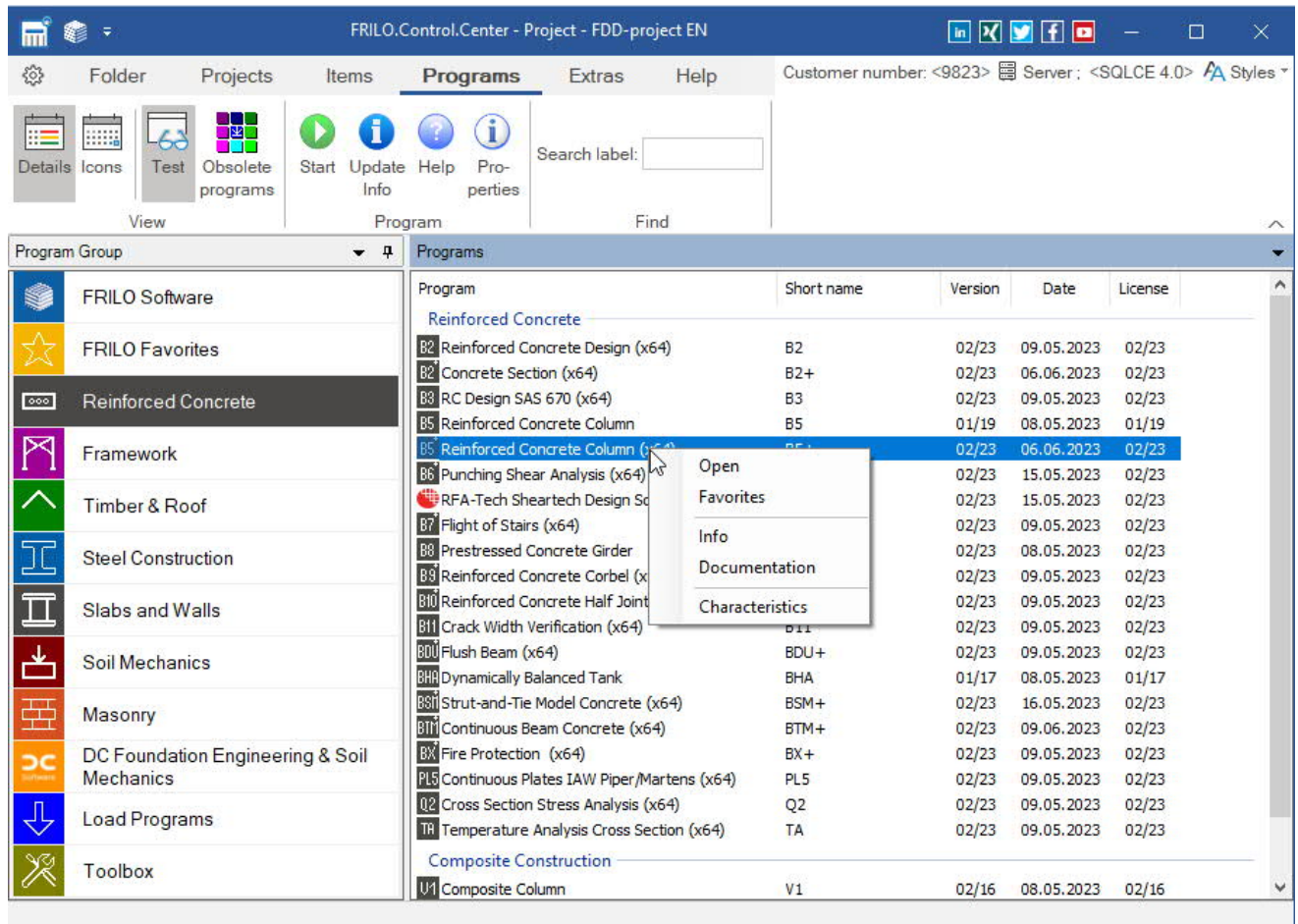
New Start the desired application, enter your data and save the item under the desired item name.



Open	Allows you to open the selected item (also per double-click).
Print preview	see Output and printing . Displays a preview of the output data in the final layout. You can jump to the respective sections via the table of contents. The print dialog is displayed when activating the icon "Print".
Item history	When saving an item after editing, the current version is not overwritten but maintained as "older version" on the hard disk. You can open "older versions" via this function, if required.
As template	Allows you to save the selected item as a template. Frequently used items can easily be defined by saving the basic item as a template and use it each time for the definition.
Notes...	Dialog for creating one or more notes for this item - with options for priority, completeness, completion. See "Meaning of the column symbols" above.
Delete	Delete the selected item from the list after clicking OK in the confirmation prompt. To select several items for deletion use the Shift or Ctrl key. Extras allows you to restore deleted items unless you removed them completely from your computer using the "Clean up folder" function.
Duplicate	Copy and paste of an item in the same project (e.g. as a basis for a similar item).
Copy	Allows you to copy a single or several items for pasting them subsequently into another project. You can also move items with your mouse via drag & drop.
Move	Cuts the currently selected item and paste it into a subsequently selected folder and project via the context menu option "Paste".
Paste	Pastes a previously copied item into this or another project. If you paste it into the same project, it is marked as a duplicate with a name extension.
Rename	Change an item name.
Support request	see basic operating instructions – Help .
Send as mail	Send an item per e-mail as an *.FLPos file. The recipient can import this item with the help of the import function. You can add additional files to the enclosure.
Im/Export	Import and export FRILO items (*.FLpos files) or DC-items (*.db or*.dc) - the folder with the source files can be specified. You can import FRILO items that you have received via mail for instance. <i>Note: Drag & Drop items into the item-area.</i>
Word Export	Save the output of this item as an MS Word file (*.docx).
Program filter	The filter dialog allows you to select the applications associated to the items in the item list. In large projects with long item lists, you can find the desired item faster with the help of this filter.
Refresh list	Update the item list (after deleting items for instance).
Properties	Displays the item properties (name, directory and other details).

Programs

Here you can directly access the FRILO programs without prior definition of project folders, projects or other settings. The saving and naming of projects and items is carried out directly from the "Save as" dialog of the respective program.



FRILO Software

Here all FRILO programs are listed in a single list.

Favorites

You can put together frequently used programs in a favorites list. To do this, right-click on the program and select "Favorites".

Test

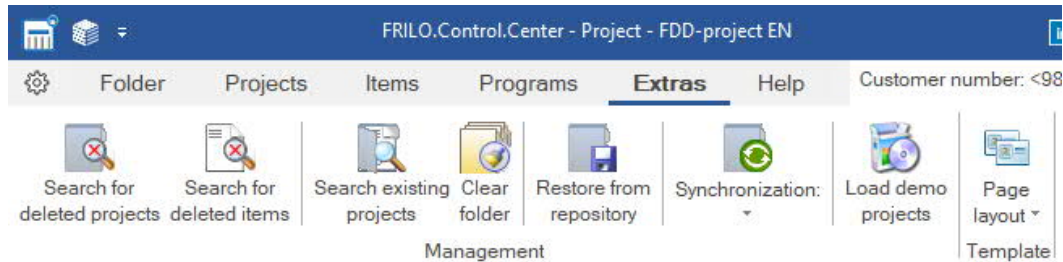
FRILO customers can view the FRILO demo programs here and test them for 30 days. So you do not have to install a demo version for a demo!

View update info / manual

Via the context menu (right mouse button) of each program you can call up the update info as well as manual / documentation.

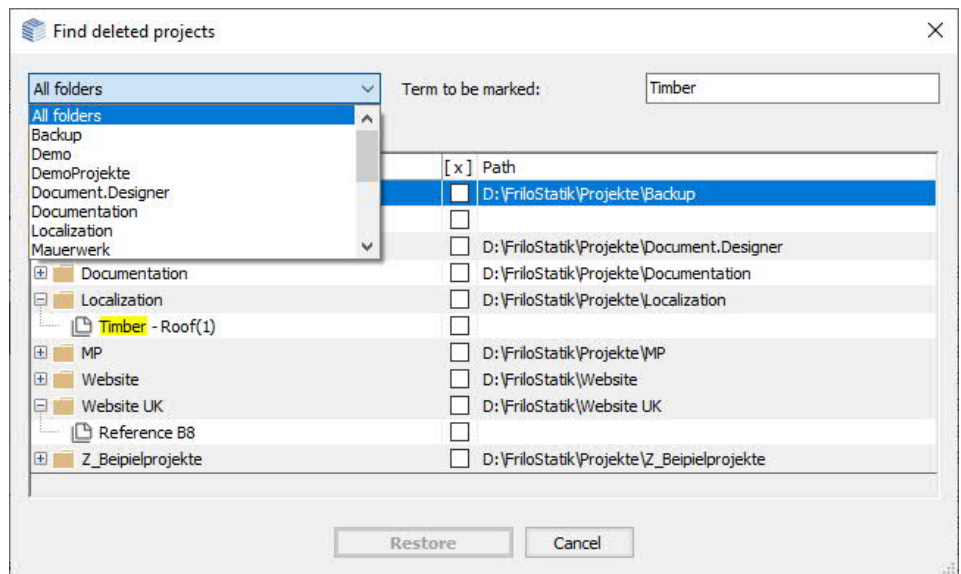
Extras

You can find useful help functions on this tab.



Search for deleted projects

If you have deleted individual projects from a folder, you can restore them as long as they have not been completely deleted using the "Clean folder" function. Select the project folder in which you want to search or "All folders". Enter a search term. The terms found are highlighted in colour and you can select (click) those to be restored. If you click on "Restore", these projects are displayed again in the project window.



Search for deleted items

Same functionality for items as described in the previous paragraph for projects.

Search existing projects

Search and list project folders (folders in which FRILO projects are stored) on a drive directory. You can select the starting point (subdirectory) under which to begin the search.

Clean folder

This function deletes finally and irrevocably those items and projects that you have removed from the view with the help of the menu option Delete.

Restore from repository

If you are not backing up your backups using ▶ [Projects](#) ▶ Export (saving projects as *.archive file), but simply copy the original project folders, you can use this function to search for such copied projects. See also [export / save, import / restore projects](#).

Synchronization

Displays synchronized projects on an external media (e.g., USB stick).

See ▶ [Synchronize Projects](#).

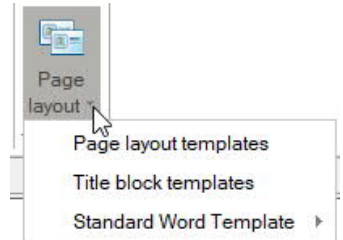
Load demo projects

FRILO demo projects can be downloaded online and installed after selection. Specify country, folder name and directory.

Page Layout templates

Here you can manage templates for the page layout or a title block for the [PLT](#)-program. The Layout includes the page header, footer, margins, fonts and so on. Different standard templates are already predefined. You can edit them and save them as custom templates or create a template completely individually.

- ▶ See the chapter [page layout](#) and the detailed description in the document [page layout](#).



Helpful application hints

Context menu

To display the context menu, click right in the corresponding section of the user interface ([Project folder](#), [Project list](#), [Item list](#)).

The context menu offers the functions that are available in the respective section. A right click in the area of the project list, for instance, displays a menu with all functions available for project management and editing.

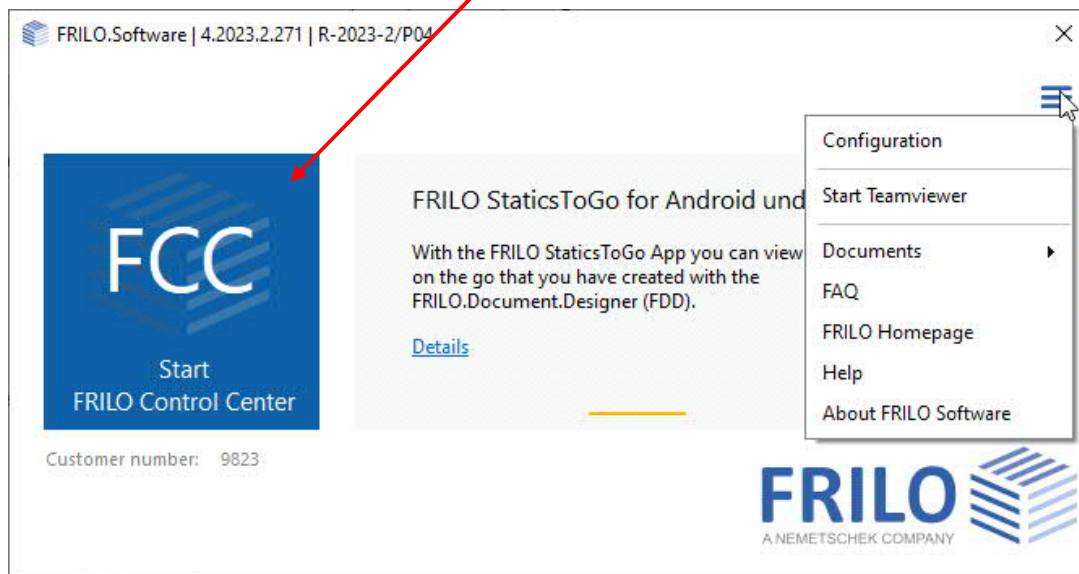
Important note: The menu bar only displays the icons of the most important functions, whereas the context menu offers further available functions.

First steps

The following example shall show you briefly how to create a folder, a project and an item.

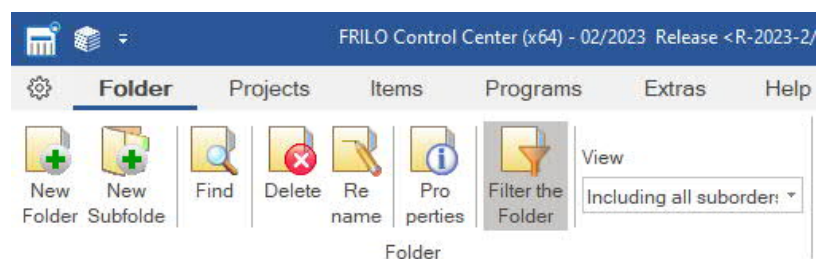
Launching the FRILO start environment

First, start FRILO Software via the corresponding icon on your Windows® user interface. Then launch FRILO Control Center (FCC).



Creating folders

Click in FRILO Control Center on the [Folder](#) tab to "New folder" and specify a folder name. We are going to set up a project in this folder in the following.



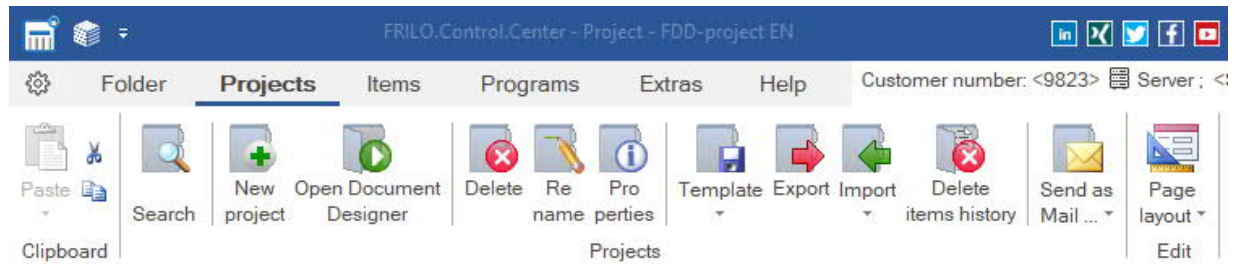
Creating projects

Click on the "Projects" tab and select the option "New project". Enter a name for the project. The empty project is now shown in the [Project list](#) of FRILO Control Center. We are going to set up an item in this project in the following.

Creating items

Click on the "Items" tab and select the option "New item". A selection window with all available FRILO applications is shown. Select an application and launch it per double-click. For our little exercise, define a small system, save it under an item name and exit the application. The newly created item is shown in the [Item list](#) of the previously created project.

Export/save, import/restore projects



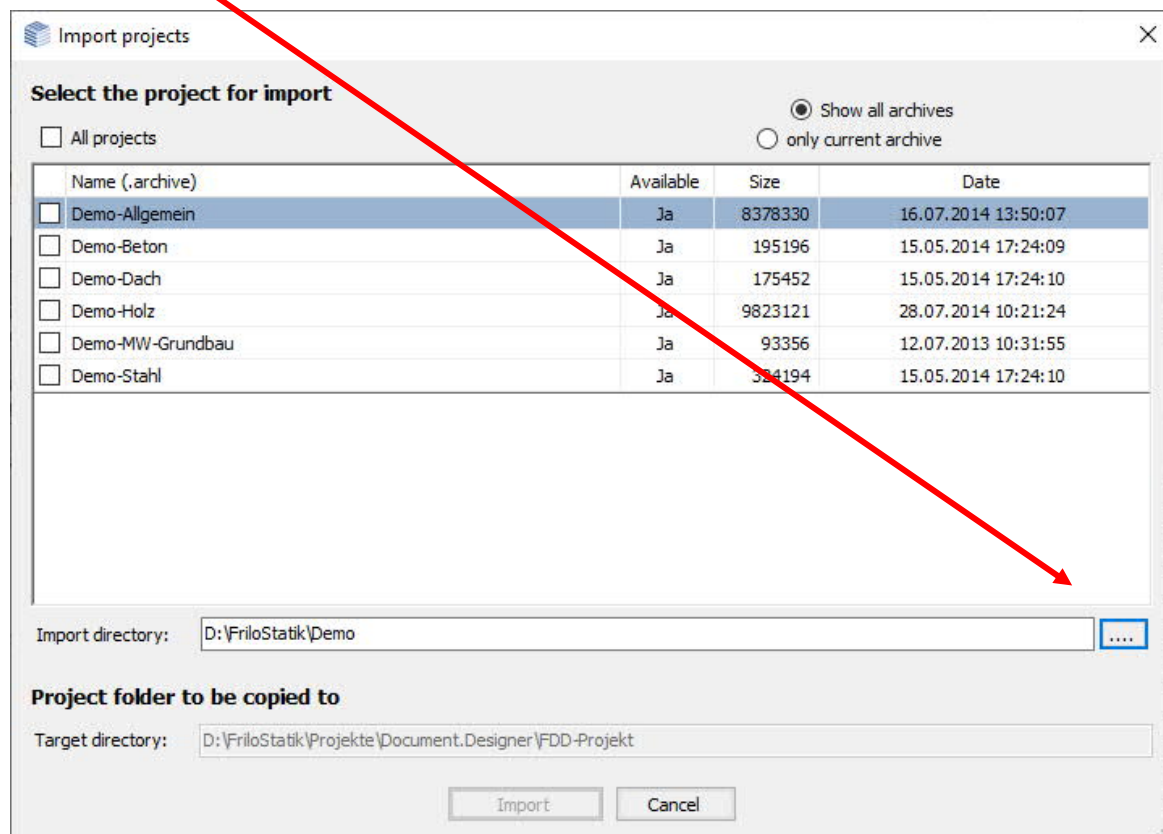
Export

Allows you to save projects in freely selectable folders. Default is D:\FriloStatik\Backup. The files have the extension "archive". Optionally, the PDF documents of projects can be excluded from export (for example, if the storage space is limited).

Import

In order to import/restore projects, for instance, select the [project folder](#) to which projects should be imported. Click to the "Projects" tab, select first "Import/export" and then "Import projects".

Select the path where the system should search for projects to be imported in the displayed dialog.



Select either individual projects to be imported or tick the option "All projects".

Click to "Import". If the imported projects are not shown in the FCC [project list](#), refresh the list via the F5 key or the corresponding option in the [context menu](#).

Synchronize projects


If you are working on different computers, you can synchronize the projects on these computers, e.g. via USB stick.

Example: You change a project on PC1, connect the USB stick and then synchronize the project - right-click on the project and click "[Synchronized](#)".

The folder FriloSync is created on the USB stick if this folder is not already present.

In this folder on the USB stick, the project is saved/synchronized.

Sync

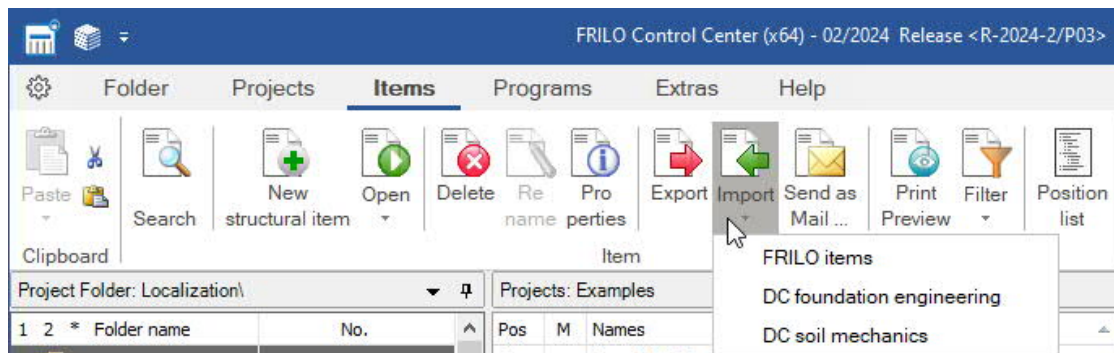
The synchronized project is marked with this icon: 

After logging off and removing the USB stick, synchronized projects are marked with this symbol: 

Then connect the USB stick to PC2. The projects in the FriloSync folder are now synchronized with the corresponding projects on PC2.

You can also click on Extras - Synchronization to display synchronized projects on the USB stick.

Import/export items (FRILO and DC)



Click to the "Items" tab and then to the "Import/Export" icons. Exported items have the file extension "flpos".

Note: You can also use Drag & Drop into the item area of the FRILO Control Center.

In addition to the FRILO items, items from the DC programs (*.db and *.dc) can also be imported.

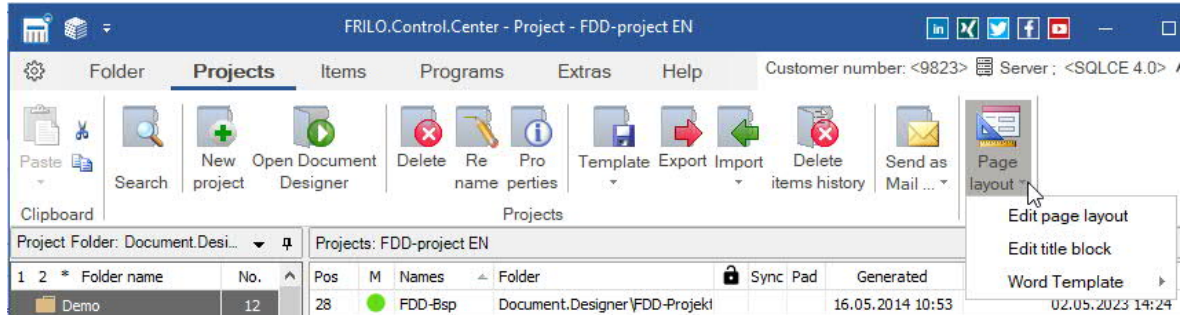
See also the chapter Directories in the DC operating principles.

Page layout

We distinguish between the "page layout templates" - here you can define different templates - and the "project-specific page layout", which is stored in each individual project.

Thus, in addition to different page headers and page footers, different page layouts can also be created for different projects.

The page layout of a project can also be saved as a template for other documents.



[Edit title block \(for the PLT program\)](#)

The layout for a [title block for the program PLT](#) - Slabs by Finite Elements can also be edited here.

[Word/Plan templates](#)

Word templates for the "project" can be created/edited here. These are used when exporting an output as a Word file (in the respective program at ▶ File ▶ Export ▶ Word (.docx) or in the [item context menu](#).

Under "Extras" standard Word templates can be edited/selected as well as Word templates for export in plan format.

[Detailed description of the page layout](#)

The page layout and the functions for editing (Layout Editor) are described in detail in the separate document ▶ [page layout](#).